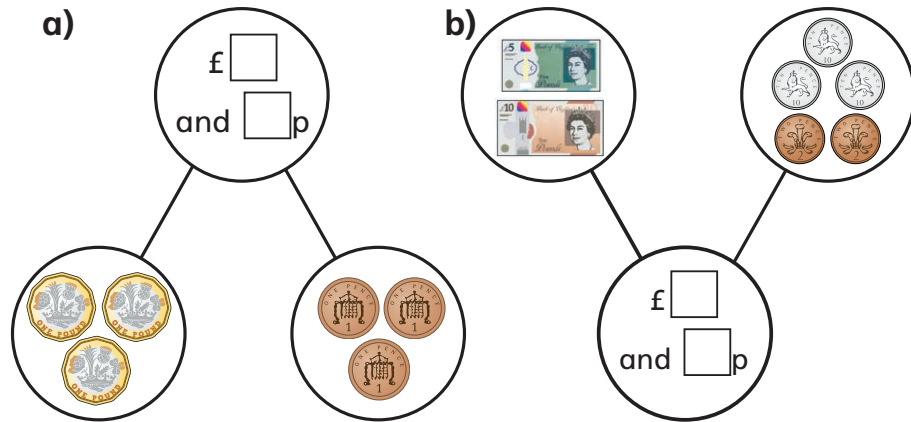


1 Complete the part-whole models.



2 How much money is there altogether?



3 Complete the additions.

- a) $£5 + £1 + 50p + 5p = £\square$ and $\square p$
- b) $£10 + £1 + 2p + 1p = £\square$ and $\square p$
- c) $£\square$ and $\square p = £50 + £20 + 50p + 2p$
- d) $£5 + 20p + 2p + £1 = £\square$ and $\square p$

4 Fill in the gaps to make the statements correct.

- a) $£\square + £1 + 50p + 10p = £21$ and $\square p$
- b) $£10 + £2 + 20p + \square p + 2p = £12$ and $72p$
- c) $£5 + \square p = £5 + 5p + 20p + 50p + 2p$

3 Complete the additions.

a) $£5 + £1 + 50p + 5p = £\square$ and \square p

b) $£10 + £1 + 2p + 1p = £\square$ and \square p

c) $£\square$ and \square p = $£50 + £20 + 50p + 2p$

d) $£5 + 20p + 2p + £1 = £\square$ and \square p

4 Fill in the gaps to make the statements correct.

a) $£\square + £1 + 50p + 10p = £21$ and \square p

b) $£10 + £2 + 20p + \square$ p + $2p = £12$ and $72p$

c) $£5 + \square$ p = $£5 + 5p + 20p + 50p + 2p$



5 Ron has £18 and 63p in his money box.

He empties the money onto the table, but some falls on the floor.



How much money falls on the floor?

What coins or notes could they be?

6 Annie has some coins in her hand.

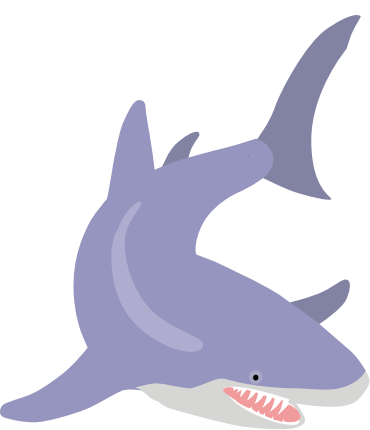
Amir has some notes in his hand.

Who has more money?

How do you know?



Sharks and whales are both formidable predators. They both live in the oceans. They are also very different.



SHARKS

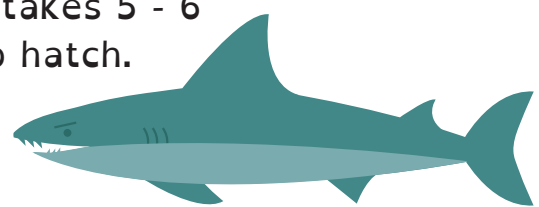
Sharks are fish.

R: Are sharks mammals or fish?
mammals fish

Sharks have gills. They can breathe underwater.

I: What help sharks to breathe underwater?
V: Which word means that a baby comes out of its egg?

Sharks lay eggs. It takes 5 - 6 months for them to hatch.



The tail fins of sharks are vertical.

S: What is the main difference between shark and whale tail fins?

WHALES

Whales are mammals.

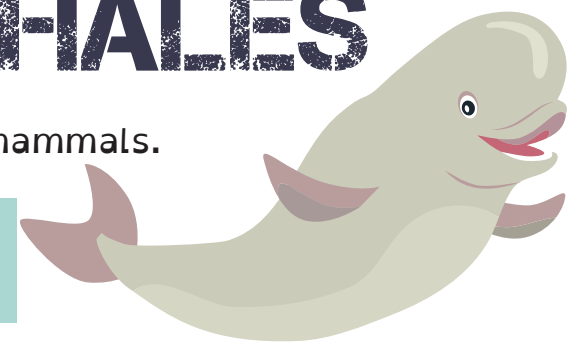
R: Which animals have blow-holes?
sharks whales

Whales have a blow-hole. They can't breathe underwater. They swim to the surface to breathe.

V: Which word means the top of the ocean?

Whales give birth to live young. They are pregnant for between 9 and 17 months.

The tail fins of whales are horizontal.



Answers

R: Fish

R: Whales

I: Gills

V: Hatch

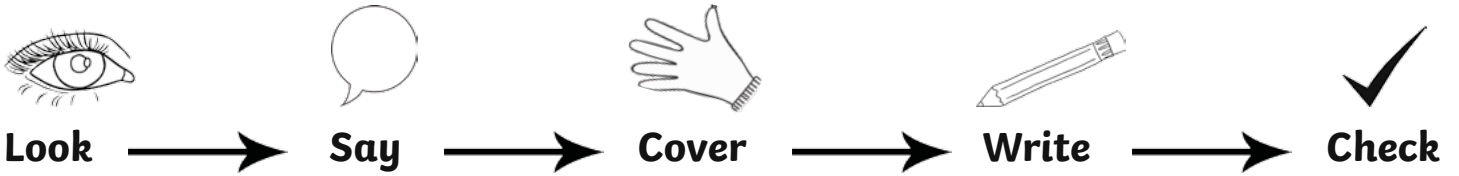
V: Surface

S: Shark tail fins are vertical, whale tail fins are horizontal

Words That End With 'dge' and 'ge'

Practice the words on this list using look, say, cover, write and check.

Hint: the /j/ sound is spelt 'dge' or 'ge' at the end of some words. Usually the 'dge' spelling follows a short vowel sound and the 'ge' spelling follows a long vowel sound.



Word	1st try	2nd try	3rd try
badge			
edge			
bridge			
judge			
fudge			
change			
village			
huge			
large			
age			